



# *WizSense*

## IPC 2 Series

IPC Group

2022.06

# CONTENTS

01

## Product Overview

Fixed-focal Series

Vari-focal Series

02

## Key Features

SMD Plus

Perimeter Protection

Quick Target Search

Smart Codec

Structure Appearance Upgrade

Web 5.0

03

## Application Scenarios

Restaurant

Shop

Building

School

Station

04

## Recommended Solution

Recommended Solution

NVR & Software Firmware Version

# Product Overview



## Fixed-focal Series

- 2MP, 4MP, 5MP, 8MP
- 2.8mm; 3.6mm; 6mm, 8mm (Only T Bullet support 6mm, 8mm)
- Intelligent monitoring: Intrusion, tripwire (the two functions support the classification and accurate detection of vehicle and human)
- Built in Mic, -AS model support Alarm 1/1, Audio 1/1
- Built-in IR LED, Supports max. 256 G Micro SD card
- 12 VDC/PoE power supply
- IP67 protection, IK10 (Supported by Dome)
- **5MP S bullet appearance has switched to E bullet appearance, and doesn't have T bullet appearance.**



IPC-HFW2241S-S  
IPC-HFW2441S-S  
IPC-HFW2841S-S



IPC-HDW2241T-S  
IPC-HDW2441T-S  
IPC-HDW2541T-S  
IPC-HDW2841T-S



Upgraded

IPC-HFW2241T-AS  
IPC-HFW2441T-AS  
IPC-HFW2841T-AS



Upgraded

IPC-HDW2241TM-S  
IPC-HDW2441TM-S  
IPC-HDW2541TM-S  
IPC-HDW2841TM-S

Upgraded



IPC-HDBW2241E-S  
IPC-HDBW2441E-S  
IPC-HDBW2541E-S  
IPC-HDBW2841E-S

E Bullet



IPC-HFW2541E-S

Note: For the detailed release date of the products, please refer to the product list.

# Product Overview



## Vari-focal Series

- 2MP, 4MP, 5MP, 8MP
- 2.7-13.5mm
- Intelligent monitoring: Intrusion, tripwire (the two functions support the classification and accurate detection of vehicle and human)
- Built in Mic (Excluded 5MP Bullet & Dome), -ZAS model support Alarm 1/1, Audio 1/1
- Built-in IR LED, Supports max. 256 G Micro SD card
- 12 VDC/PoE power supply
- IP67 protection, IK10(Supported by Dome)
- 5MP T Bullet & R Dome uses the old version appearance, can not support built-in MIC.

Upgraded

IPC-HFW2241T-ZAS  
IPC-HFW2441T-ZAS  
IPC-HFW2841T-ZAS

IPC-HFW2241T-ZS  
IPC-HFW2441T-ZS  
IPC-HFW2841T-ZS



IPC-HDW2241T-ZS  
IPC-HDW2441T-ZS  
IPC-HDW2541T-ZS  
IPC-HDW2841T-ZS

Upgraded

IPC-HDBW2241R-ZAS  
IPC-HDBW2441R-ZAS  
IPC-HDBW2841R-ZAS

IPC-HDBW2241R-ZS  
IPC-HDBW2441R-ZS  
IPC-HDBW2841R-ZS

Old Appearance



IPC-HFW2541T-ZAS  
IPC-HFW2541T-ZS

Old Appearance



IPC-HDBW2541R-ZAS  
IPC-HDBW2541R-ZS

Note: For the detailed release date of the products, please refer to the product list.

# Key Features



# Key Features-SMD Plus



After capturing the target within monitoring range, camera filter leaves, lights, pets and other disturbing objects, focus on Human and Vehicle.

## False Alarm Filtering

- Filter leaves, lights, pets and other disturbing objects

## Simple

- Simple configuration, enable in only one single button

## Quick Target Search

- Human & Vehicle optional
- saving event retrieval time

## Inclusive

- High Cost-effective, let world share Security by AI

## Alarm Visualization

- Deliver real-time alarm prompt.
- Monitor video anytime and anywhere.



# Key Features-SMD Plus

---

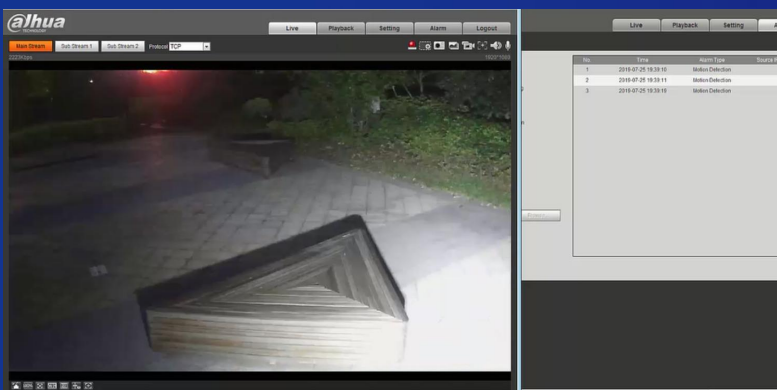


	SMD Plus
Detection accuracy rate (Human & Vehicle)	98%
Human Detection Distance	Up to 6m (2.8mm fixed-focal camera)
Vehicle Detection Distance	Up to 9m (2.8mm fixed-focal camera)
Small animals false alarm rate (cats, dogs)	< 2%
Large animals false alarm rate (cattle, horse, sheep, deer)	<10%

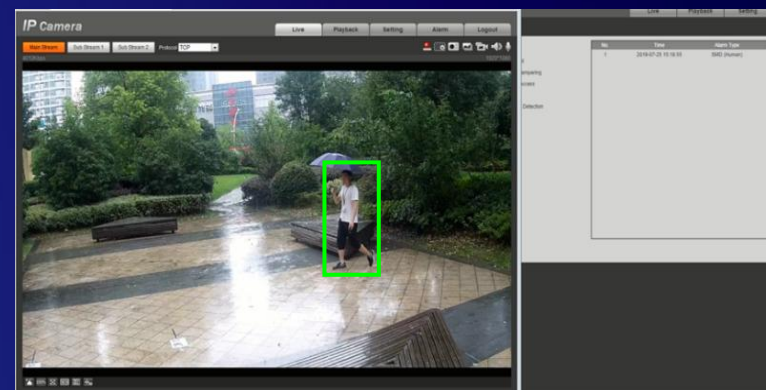


# Key Features-SMD Plus

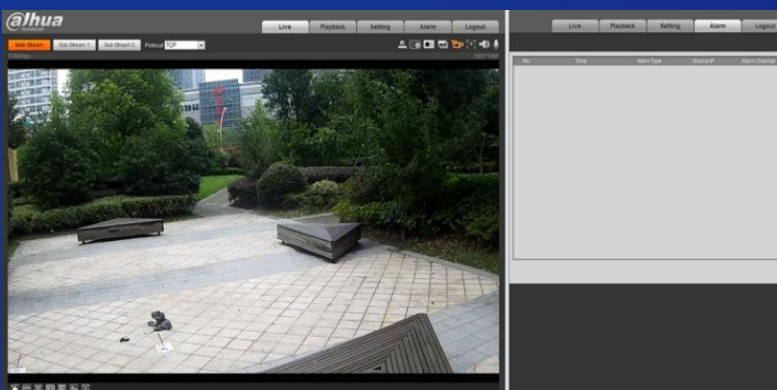
After capturing the target within monitoring range, camera filter leaves, lights, pets and other disturbing objects, focus on Human and Vehicle.



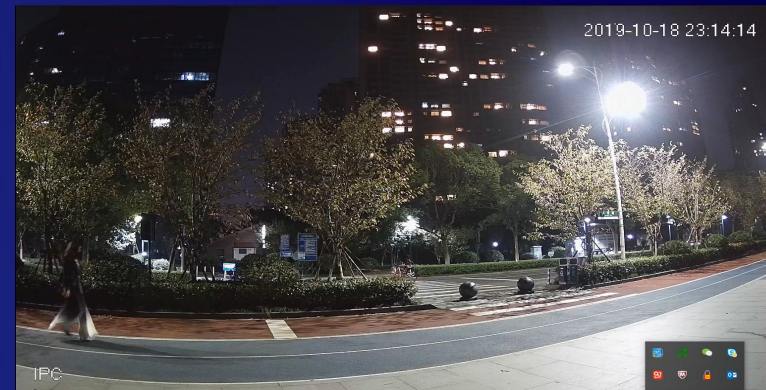
Filtering useless  
information(lights)



Push alarm caused by  
human



Filtering useless  
information(pets)



Push alarm caused by  
human and vehicle



# Key Features-Perimeter Protection



With deep learning algorithm, Dahua Perimeter Protection technology can recognize human and vehicle accurately. In restricted area (such as pedestrian area and vehicle area), the false alarms of intelligent detection based on target type (such as tripwire, intrusion) are largely reduced.



## Traditional IVS

- 1 Serious false and missed alarm.
- 2 Inefficient to inquire video recording
- 3 Poor adaptability

## Perimeter Protection

- 1 Human and Vehicle classification.
- 2 Quick search
- 3 Meet a variety of scenes

# Key Features-SMD Plus & Perimeter Protection



Differences between Perimeter Protection and SMD:

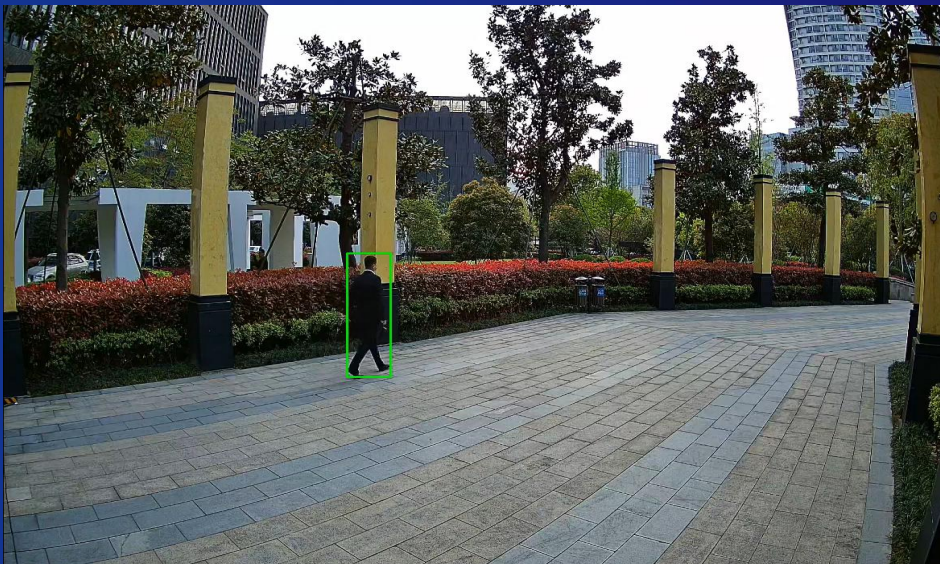
	Perimeter Protection	SMD
Supported channels (for back-end intelligence)	Several channels	Up to Full channels
Configuration	Draw tripwire or intrusion rules	Enable via single button
Application Scenario	Applicable to specific areas, especially places that needs direction	Whole scene by default



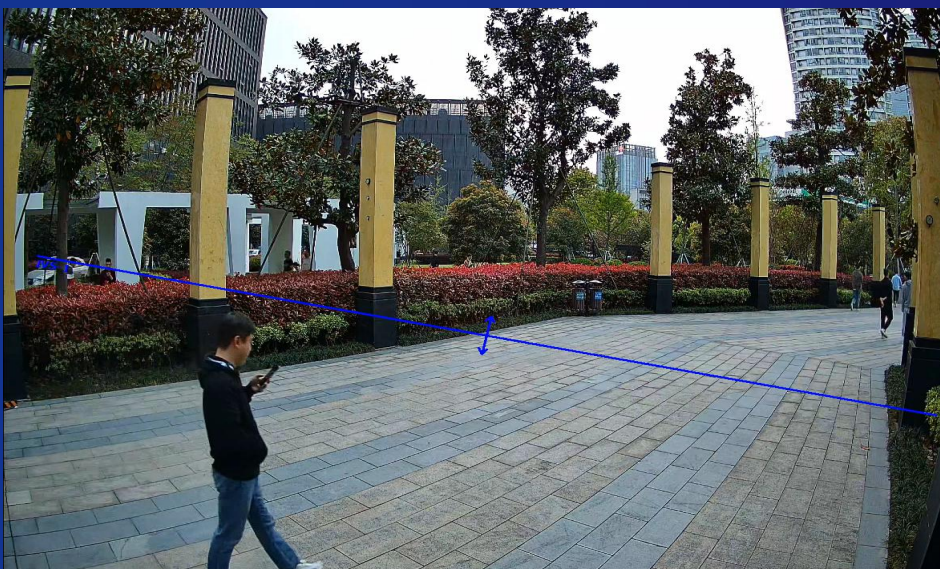
# Key Features-SMD Plus & Perimeter Protection



SMD Plus



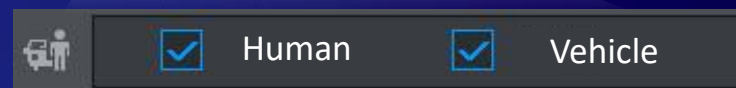
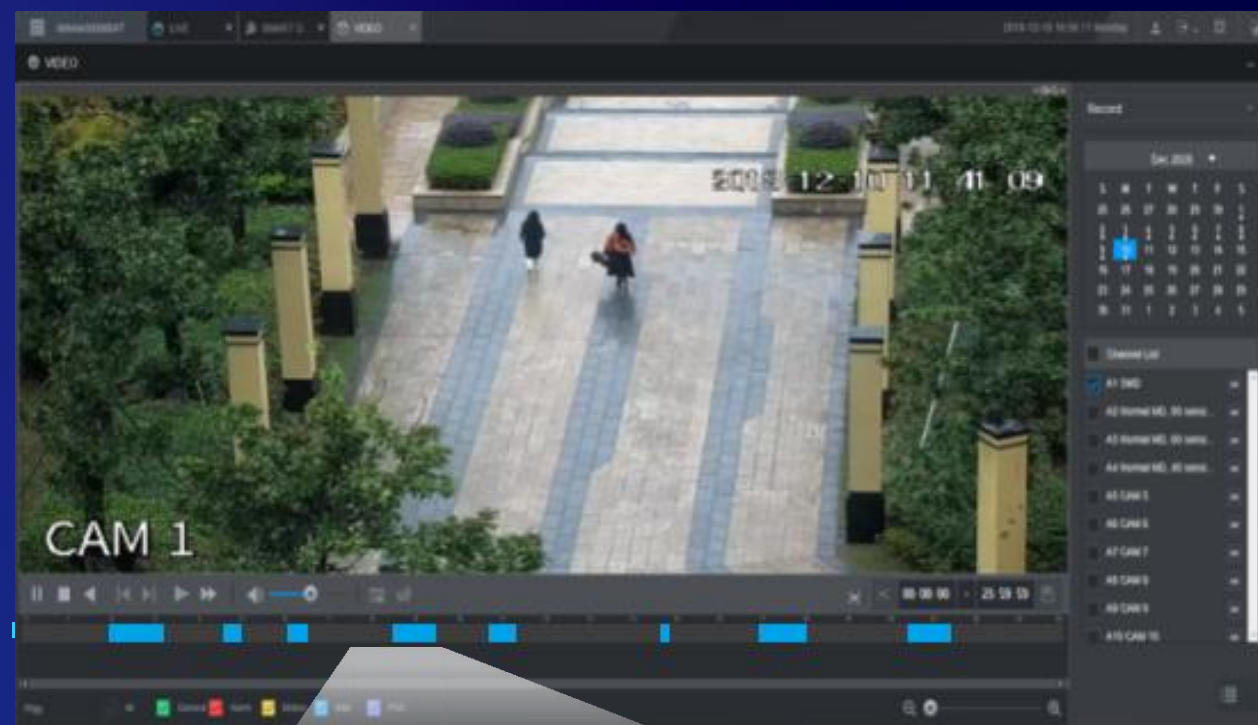
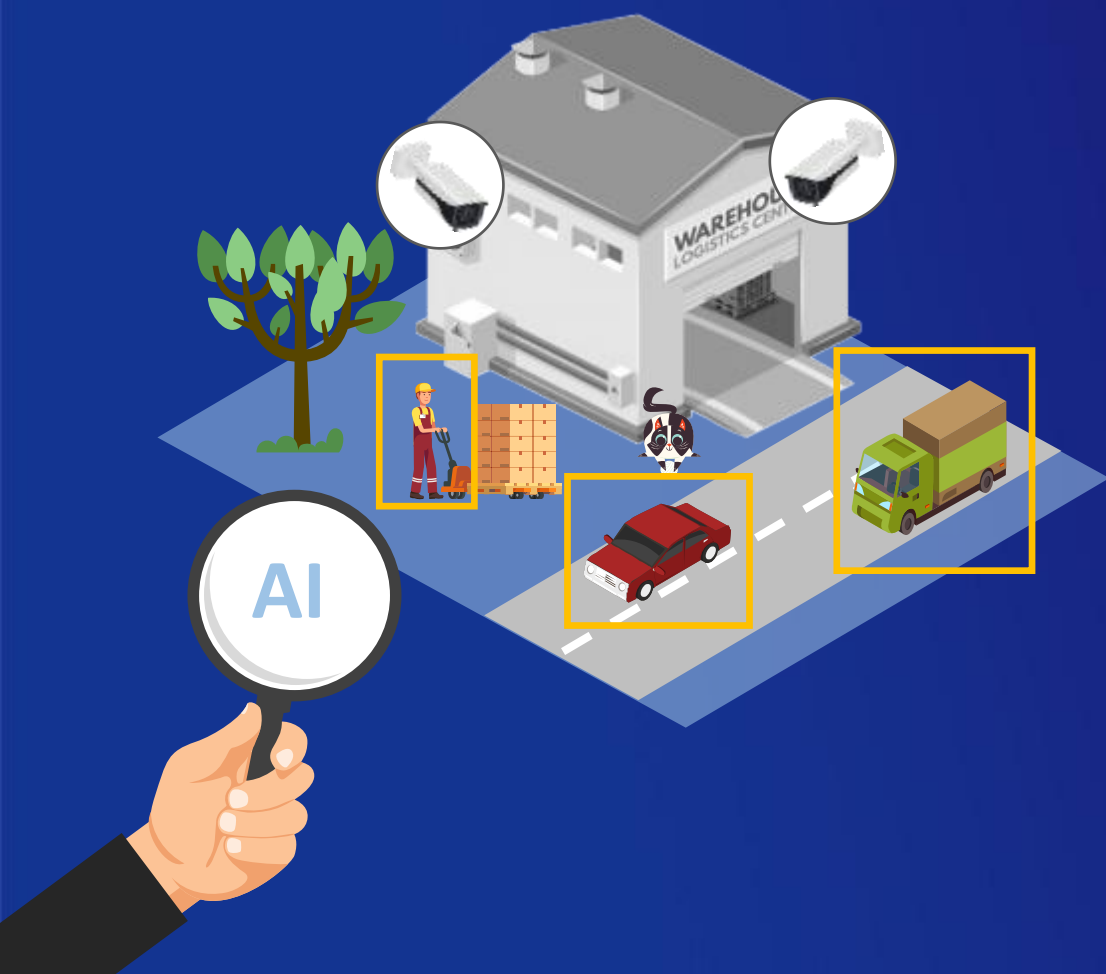
Perimeter Protection





# Key Features-Quick Target Search

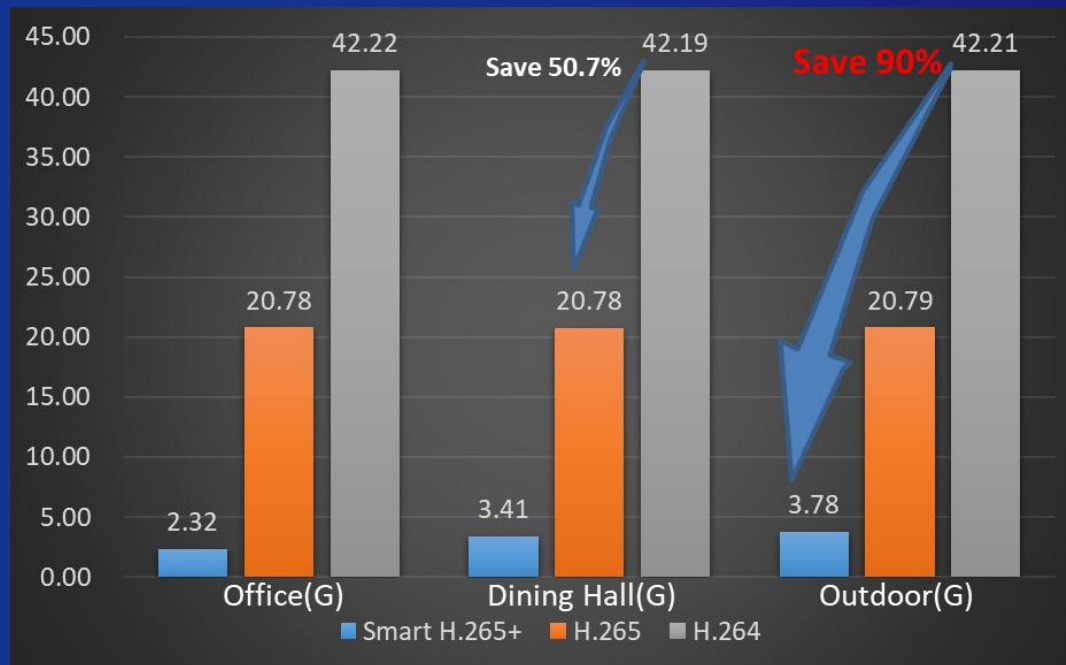
Extract and classify human and vehicles from massive video data, easy for end users to trace historical information and analyze. Human & Vehicle optional for playback to achieve quick target search, saving event retrieval time.



# Key Features-Smart Codec



Adopting advanced algorithm of auto stream control according to the environment, Dahua smart codec technology realizes the higher efficiency than (H.265 & H.264 ), providing high-quality video, and reducing the cost of storage and transmission.



With the same scenario, the storage cost of 1080P low bit-rate scheme one day is more than **90%** lower than that of H.264



General Camera HDD Requirement



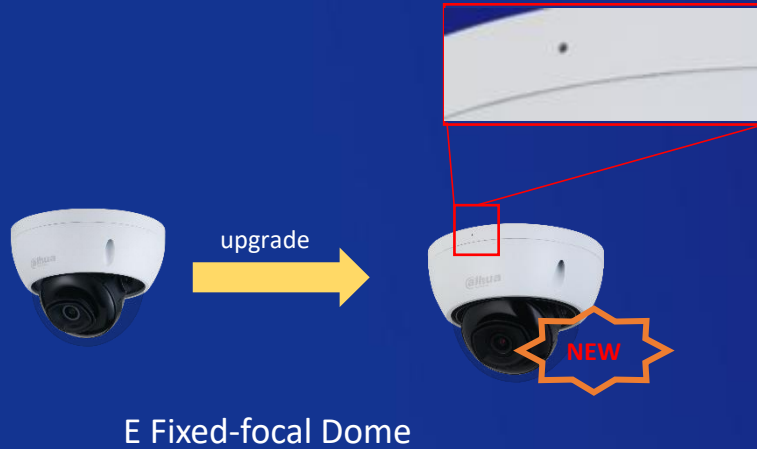
Low Bit-rate Camera HDD Requirement

**17GB saved  
per day,  
510GB saved  
per month**



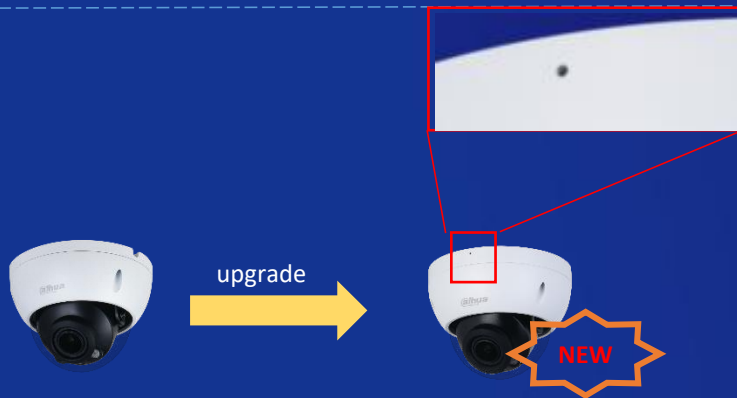
**Camera  
Free**

# Key Features-Structure Appearance Upgrade



- Support **built-in Mic**
- 3 IR LED, high quality night vision
- Increase the tilt angle from **65° to 69°**, covering a wider monitoring range.
- IP67, IK10 protection

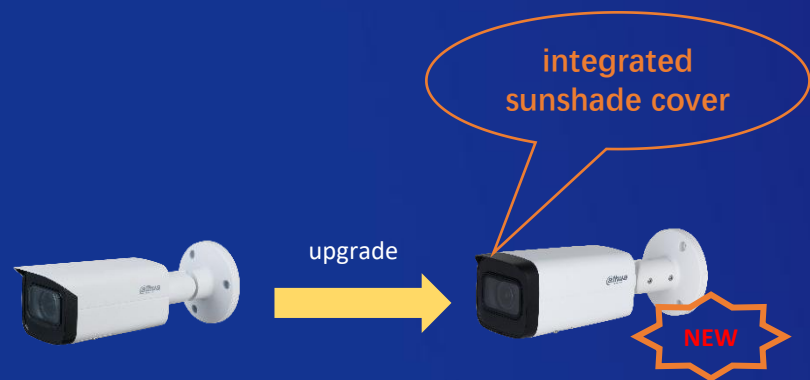
Note: Due to the 5MP(2592 × 1944), 4:3 can cover larger vertical monitoring area, 5MP fixed-focal dome's tilt angle is 0-65°.



- Support **built-in Mic (Exclude 5MP Fixed-focal Dome)**
- 3 IR LED, high quality night vision
- IP67, IK10 protection



# Key Features-Structure Appearance Upgrade



T Bullet

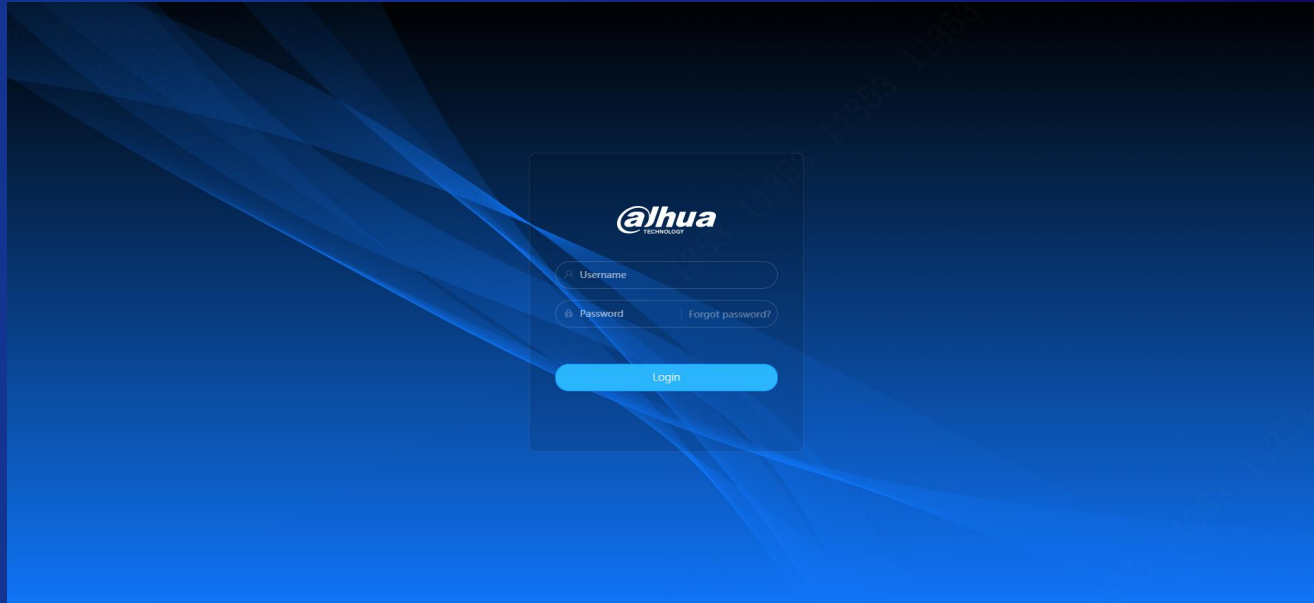
- New design of integrated sunshade cover, more aesthetic
- Support Alarm in/out, Audio in/out
- 3.6mm, 6mm, 8mm, 2.7-13.5mm
- IP67 protection



TM Fixed-focal Eyeball

- Metal mounting plate, not easy to break when mounting, more stable installation
- Support quick installation

# Key Features-WEB 5.0



WEB 5.0 Login Page

- WizSense 2 Series IPC will support WEB 5.0. The new interface design brings users a new visual feeling and operation feeling.

	Chrome ≥ 45	Chrome < 45	Firefox ≥ 46	Firefox < 46	Edge	Mac	IE
Support non plug-in	YES	NO	YES	NO	YES	YES	NO
Support plug- in	YES	YES	YES	YES	YES(>78)	NO	YES

WEB 5.0 Support Status of Plug-in

- Web 5.0 can support different versions of browsers and good compatibility.

# Series Comparison



	IPC 2x41 Series	IPC 2X31 Series	IPC 3X41-S2 Series
Stream Capability	2 Streams	2 Streams	3 Streams
Resolution	5MP(2592x1944) 20fps (4:3)	5MP(2592x1944) 20fps (4:3)	5MP(2960x1668) 20fps (16:9)
	8MP (3840 × 2160) @20 fps	8MP (3840 × 2160) @15 fps	8MP (3840 × 2160) @25/30 fps
Video Compression	Smart Codec(Smart H.265+ & Smart H.264+)	Smart Codec(Smart H.265+ & Smart H.264+)	Smart Codec/AI Coding
Intelligence	Perimeter Protection (Tripwire/Intrusion: the two functions support the classification and accurate detection of vehicle and human)	Traditional IVS	Perimeter Protection (Tripwire/Intrusion)
	SMD Plus	/	SMD 4.0, Quick Pick, AI SSA
Built-in Mic	Built-in Mic (Exclude 5MP Vari-focal Bullet & Dome)	Only Fixed-focal T & TM Eyeball	Built-in Mic
POE	POE	POE	POE
WEB Version	WEB 5.0 (WEB 5.0 will be supported in 2022.Q4)	WEB 3.0	WEB 5.0

# Competitor Comparison



	IPC 2x41 Series	2CD2XX3 Series
Stream Capability	2 Streams	3 Streams
Lens	2.7-13.5mm	2.8-12mm
Resolution	2MP, 4MP, 5MP, 8MP	2MP, 4MP, 6MP, 8MP
	5MP(2960x1668) 20fps (4:3)	6MP(3200x1800) 20fps (16:9)
Video Compression	Smart Codec(Smart H.265+ & Smart H.264+)	H.265/H.264/H.264+/H.265+
Intelligence	Perimeter Protection (Tripwire/Intrusion: the two functions support the classification and accurate detection of vehicle and human)	Perimeter Protection (Line crossing detection, intrusion)
	SMD Plus With advanced deep learning algorithm, focus on human and vehicle	Focusing on human and vehicle classification based on deep learning
Built-in Mic	Built-in Mic (Exclude 5MP Vari-focal Bullet & Dome)	-U: Built-in microphone for real-time audio security
POE	POE	POE
Face Detection	N/A	YES

# Application Scenarios

# Typical Application



## Restaurant

Ensure the basic security of the restaurant.



## Shop

Monitor shop security, focus on human and vehicle.



## Building

Real-time monitoring to ensure the safety of apartment residents.



## School

Focus on Human and vehicle, attention to real threats.



## Station

Ensure the basic security of the station.



# Solutions & Products

# Recommended Solution 1



IP Solution

SMD Plus IP Cameras + SMD Plus NVR



## Highlights:

- Flexible deployment, adjustment and management for complex scenarios
- Focus on human and vehicle, attention to real threats
- Supports full-channel AI function

## Product Selection:

### Cameras



- WizSense IPC 2 series

### Recorders



- NVR2000-I series
- NVR4000-I series

### Platform



- DSS Express

### APP



- DMSS

# Recommended Solution 2



## IP Solution

## SMD Plus IP Cameras + Conventional NVR



### Highlights:

- Allows easy deployment, adjustment and management
- Offers fast processing and accurate alarms
- Focus on human and vehicle, attention to real threats

### Product Selection:

#### Cameras



- WizSense IPC 2 series

#### Recorders



- Conventional NVR

#### Platform



- DSS Express

#### APP



- DMSS

# NVR & Software Firmware Version



Product	Model	Firmware
NVR	NVR2-4KS2	2.6.01.02.12618 DH_NVR2XXX-4KS2_MultiLang_V4.001.0000005.0.R.210709.zip
	NVR2-S3	2.6.01.02.15192 General_NVR2XXX-S3_MultiLang_V4.000.0000000.0.R.211126.zip
	NVR2-I2	2.6.01.02.12709 DH_NVR2XXX-I2_Mul_V4.002.0000000.0.R.210709.zip
	NVR4-4KS2/L	2.6.01.02.16709 DH_NVR4x-4KS2L_MultiLang_V4.002.0000000.3.R.220322.zip
	NVR5-4KS2	2.6.01.02.16717 General_NVR5XXX-4KS2_MultiLang_V4.002.0000000.3.R.220322.zip
DSS	DSS pro	2.7.01.02.02597 General_DSS-Professional_Win64_IS_V8.000.0000003.0.R.20210729.exe
	DSS Express	2.7.01.02.02598 General_DSS-Express_win32_IS_V8.000.0000003.0.R.20210729.exe
DMSS	DMSS	Download from AppStore & Google Play
Tool	Smartplayer	2.8.02.01.00494 General_SmartPlayer-Win32_Chn_IS_V4.001.0000001.0.R.200916.zip 2.8.02.01.00493 General_SmartPlayer-Win32_Eng_IS_V4.001.0000001.0.R.200916.zip
	ConfigTool	2.8.02.01.00580 General_ConfigTool_ChnEng_V5.000.0000001.6.R.20210126.zip



ENABLING A SAFER SOCIETY AND SMARTER LIVING